

# LIGHTING IN THE WORKPLACE



The European standard EN12464-1 highlights the minimum illuminance requirements for lighting of indoor workplaces. Compliance with the minimum requirements is essential to ensure the safety and health of workers.

## OFFICES



AREA	LIGHT REQUIREMENT
Open plan/ Cubicle offices	500 LX
Conference & meeting rooms	500 LX
Circulation areas & corridors	100 LX

## STORAGE & LOGISTICS



AREA	LIGHT REQUIREMENT
Warehouse aisles	150 LX
Warehouse open areas (cross-dock)	300 LX

## HEAVY INDUSTRY



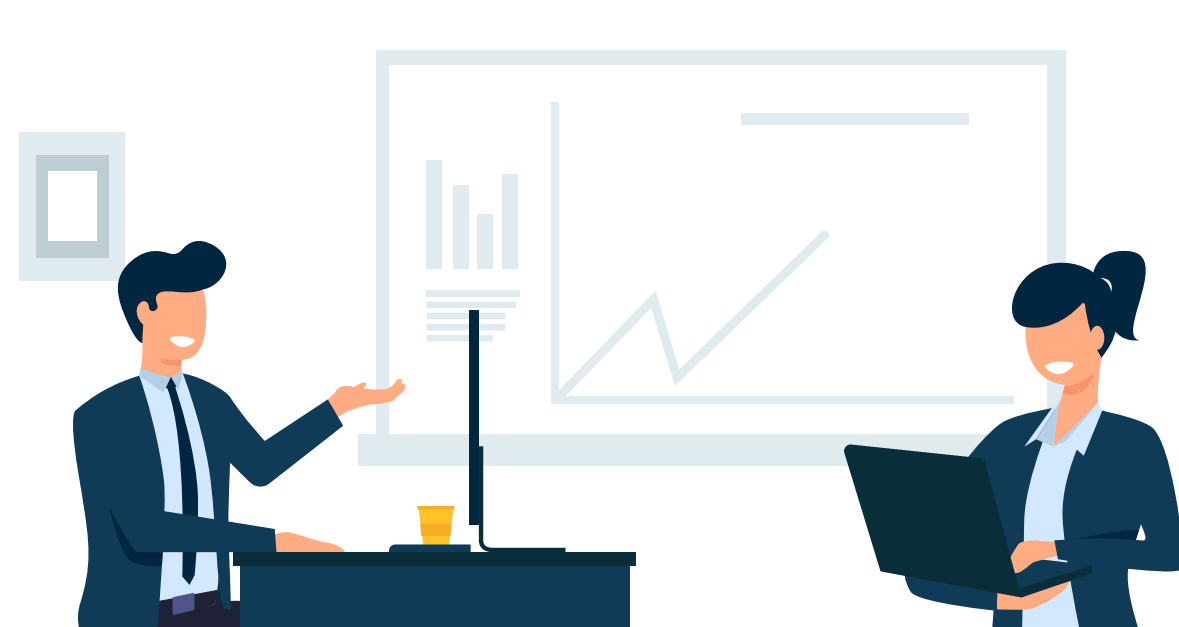
AREA	LIGHT REQUIREMENT
Production plants	200 LX
Control platforms	300 LX
Test, measurement, inspection areas	500 LX
Plant rooms, switch gear rooms	200 LX

## PRODUCTION & ASSEMBLY



AREA	LIGHT REQUIREMENT
Welding	300 LX
Machining > 0.1mm	300 LX
Machining < 0.1mm	500 LX
Assembly: Rough	200 LX
Medium	300 LX
Fine	500 LX
Precision	750 LX

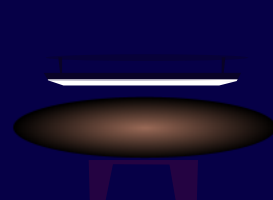
## DATA TAKEN FROM THE EUROPEAN INDOOR WORK PLACE STANDARD EN 12464-1.



The European standard EN12464-1 highlights the minimum illuminance requirements for lighting of indoor workplaces. Compliance with the minimum requirements is essential to ensure the safety and health of workers.

### According to the individual EU directive for the workplace (89/654/EEC)

Workplaces must as far as possible receive sufficient natural light and be equipped with artificial lighting adequate for the protection of workers' safety and health.



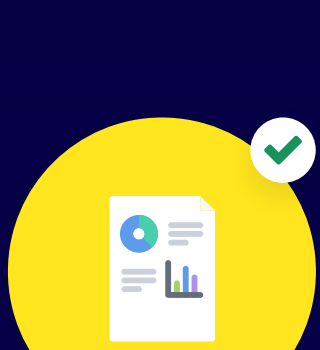
Lighting installations in rooms containing work stations and in passageways must be placed in such a way that there is no risk of accident to workers as a result of the type of lighting fitted.

Workplaces in which workers are especially exposed to risks in the event of failure of artificial lighting must be provided with emergency lighting of adequate intensity.



The directive only provides minimum guidelines for workplace lighting which fundamentally apply for all EU countries. Beyond that, EU countries can establish more extensive national requirements which do not require harmonisation with other EU countries.

### The following should be considered when reviewing the light levels of an area:



The directive only provides minimum guidelines for workplace lighting which fundamentally apply for all EU countries. Beyond that, EU countries can establish more extensive national requirements which do not require harmonisation with other EU countries.